

Cann Valley Bush Nursing Centre Inc.

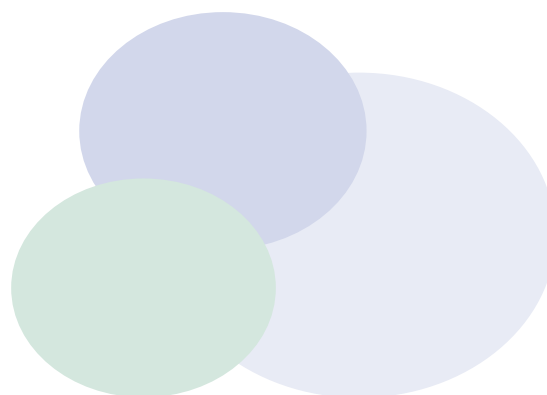
REG: A11159

2011 Annual Report



Contents

Annual Report 2011.....	3
President's Message.....	4
Committee of Management.....	5
Life Memberships.....	5
Organisational Chart.....	6
Administrative Officer Report.....	7
Nurse Manager Report.....	8
Human Resources.....	9
Our Services.....	10
Report of Operations - Revenue by Source.....	11
Service Level & Activity.....	12
How We Have Performed.....	13
Statement by members of the Committee of Management	16
Independent Auditor's Report	17
Financial Statements	19



Annual Report 2011

**39th Annual Report and Consolidated Financial Statements
As presented to the Annual General Meeting held on 12 October, 2011**

Our Vision

“As a remote nursing service the Centre is a single entry point, one stop shop, has a community based and well matched multidisciplinary services, primary care, immediate response, 24 hour access, innovation, Remote Area Nurse with the trust of the people, a range of services, comprehensive assessment, community ownership and excellent outcomes for all people in or passing through the Cann Valley and surrounding areas”

Our Mission

“To assist people to reach their potential in health and well-being”

Located in the town of Cann River in the East Gippsland Shire, Cann Valley Bush Nursing Centre was established in 1973 and provides health care for the small, remote and isolated rural township of Cann River and its surrounding area.

Cann Valley Bush Nursing Centre is a fully accredited remote rural centre with:

Quality Improvement & Community Service Accreditation (QICSA)

Home & Community Care (HACC)

Rural Primary Health Services (RPHS)

Community Aged Care Packages (CACP)

Extended Aged Care at Home Packages (EACH)

President's Message

We were finally successful in obtaining a grant for our building redevelopment. At this time we have appointed an architect: NOL Pty Ltd and we are looking forward to the planned development. It is well past time to provide a better working environment for the staff and for clients to visit. It is also an opportunity to provide a solution to the drainage problems and a better access for clients.

Our Nurse Manager, Mary Filmer, retired this year after serving this community for over 30 years. We acknowledge the role Mary has played in the continued development of the services available at the CVBNC. It has been a major commitment and we wish Mary well in her retirement.

We also welcomed Catherine Hannon as Nurse Manager. Catherine has brought a fresh approach to the position and I am sure will continue to offer our clients the best service we can afford.

Due to the financial support from ACCV there has been the opportunity for governance training for the Committee of Management at all bush nursing centres. Fi Mercer Coaching visited the centre and we spent a very productive day assessing our governance capacity. The follow up and support received since has been valuable. We have a framework for a Governance Action Plan for the next 12 months.

It is timely to also look at our Constitution. To find a committee of 12 is becoming difficult so maybe we need to reorganize our structure but still remain representative of our community.

I would like to acknowledge the support from the administrative/clerical staff. Both Kym and Sarah provide a valuable link to people who contact the CVBNC and the Committee of Management.

Thank you to all staff and volunteers for the wonderful work you do and to fellow members of the Committee of Management.

Judy McKinnon
President, Committee of Management



L to R: Mary Filmer, Judy McKinnon
Mary's farewell

Committee of Management

Cann Valley Bush Nursing Centre is governed by a volunteer Committee of Management.

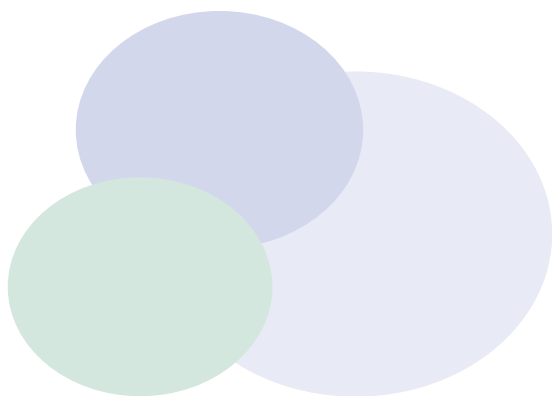
The Committee of Management comprises local volunteers who meet on the second Wednesday each month (except January).

Without these volunteers this centre would not be able to operate.

President	Judy McKinnon
Vice President	Myrna Richter
Treasurer	Rose Young

Committee	Tony Stephenson, Judy Howell, Lee Walker, Ian Quick, Adrian Nation, Pauline Stephenson
------------------	--

Life Members
Tony Stephenson
Ian Quick
Irene Cameron
Gus McKinnon

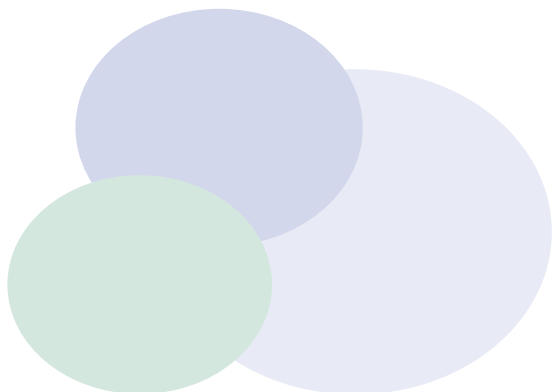
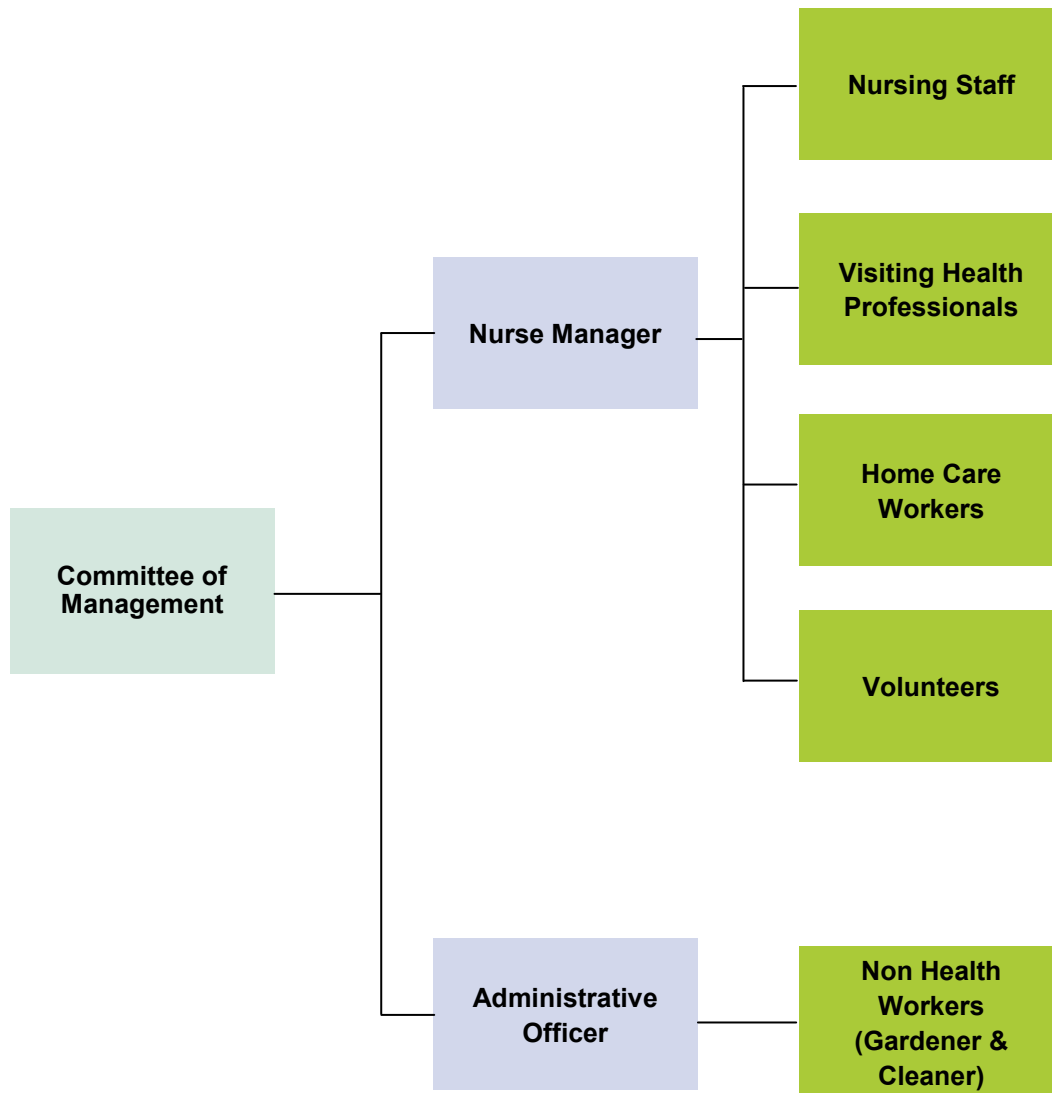


In Memory

The Committee of Management sustained a loss when Raphael Mills, a dedicated committee member, passed away on 21 October, 2010.

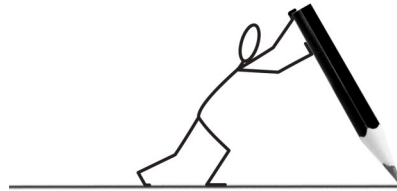
Our thoughts and best wishes extend to Raphael's family.

Organisational Chart



Administrative Officer Report

The last financial year has once again been very productive at the Cann Valley Bush Nursing Centre as we continue to meet the ever growing health needs of our community. Our nursing staff, home care workers and administrative staff continue to update skills in many aspects of their respective positions, which are passed on through services provided to our clients.



The Cann Valley community values the services the centre provides and our incorporation currently has 67 single and 109 family memberships.

We thankfully acknowledge the continued funding received from:

- Department of Health & Ageing - RPHS grant, CACP & EACH packages
- Department of Health - Small Rural/HACC Health Care and Support Grant

In 2010 Department of Health provided capital funding to replace our nursing vehicle, purchase a generator and to do major redevelopment to our “elderly” centre.

Aged & Community Care Victoria (ACCV) continues to provide valuable support and guidance and also facilitate our quarterly BNC network meetings.

“Either you run the day or the day runs you.” Jim Rohn The administrative staff likes to “run their day” and meet the ever growing requirements of the various government departments and the day to day operations of the centre.

Bush nursing centres continue to provide valuable services to the rural, isolated areas of Victoria. This was highlighted when in 2010 Victoria celebrated 100 years of Bush Nursing. Representatives from BNCs around Victoria gathered together in Melbourne in August 2010 to reminisce and celebrate. Also on 14 March, 2011 Centenary Celebrations took place at Beech Forest, Victoria, the birthplace of bush nursing in Victoria.

As we face the victories and challenges that lay ahead, I’ll leave you with this thought,
“If you can dream it, you can do it!” *Walt Disney*

Kym McLeod
Administrative Officer



L to R: Mary Filmer,
Health Minister Andrew Daniels MP

Nurse Manager Report

“Change brings opportunity”, Nido Qubein

2011 has certainly been a year of change at Cann Valley Bush Nursing Centre. In 2011 we farewelled Mary Filmer after 39 years of dedicated service as Bush Nurse, many of those as Centre Manager. Mary is known for her commitment and loyalty to the Cann Valley community in delivering health services to those who are unwell and to those in need of care and support. The number and range of services that are currently provided by the CVBNC are reflective of Mary's commitment to the community. We thank her for the many years of dedicated service.

During 2011 we were informed that we had been successful in an application for capital works to undertake major refurbishment work. Our current building which was opened in 1973, has served us well over that time, however, the time has come to modernize the facility to better reflect the work we currently do and what is expected of us.

While our place of work is important, it is the people who work in it and from it that make the CVBNC the place that it is. We have a skilled and competent team from administration, home support workers, Planned Activity Group workers (Adult Interest Group and Men's Shed), nurses and centre cleaners and maintenance workers. The centre relies on a small but dedicated team of volunteers to support the programs offered by the BNC, we thank them for their time and effort.

In addition, the volunteer COM has dedicated themselves to ensure the work of the BNC is conducted in a responsible & accountable manner. The COM has participated in a governance capability effectiveness assessment and action plan which will direct governance education of the COM over the next twelve months. I thank them in advance for their efforts toward this education and to the delivery of a sustainable health service responsive to the needs of the community.

The Cann River community have benefited from the delivery of a range of primary health care services to support the health and wellbeing needs of our community. These services include physiotherapy, massage therapy, dental/oral health, counseling, occupational therapy, speech therapy, General Practitioner and Maternal & Child Health Nurse.

During 2011 we said goodbye to two of our Remote Area Nurses, Anne Swift and Nicola Gorwell who have served the community well. We thank them for their service and wish them well with their future endeavors.

In the year ahead, we look forward to developing and strengthening partnerships with key organisations in our local area and in our region. As a small organisation we benefit from quality relationships with key players in our region in particular, Orbost Regional Health and Primary Care Partnerships as with our funding bodies Health Department Victoria and Commonwealth Department of Health and Ageing. For some time the Bush Nursing Network has benefited from formal links with Ambulance Victoria who facilitate annual Remote Area Nurse training and in the year ahead we look forward to consolidating these links with our local Ambulance Victoria paramedic and volunteer crews.

The year ahead will be a busy one as we prepare for a major transformation of our centre and undertake strategic planning to direct our work. To our staff, the community and our partners we look forward to working together to deliver quality and responsive health services to the Cann Valley community.

Catherine Hannon
Nurse Manager



Human Resources

Nurse Manager

Catherine Hannon
Mary Filmer
(retired 31/07/11)

Administrative Officer

Kym McLeod

Clerical Assistant

Sarah Nation

Clinical Services

Division 1 Registered Nurses

Mary Filmer
Anne Swift
Marija Mrsic
Catherine Hannon
Nicola Gorwell
Diane Coxon
Linda White

Home Based Services

Terri Lobley
Cheryl Checkley
Kaye Henderson
Ross Leary
George Bennett
Brian Dumper
Kellie Hall
Max Kalz

Volunteers

Kaye Henderson
Andy McLeod
Garry Smith
George Bennett
Lee Walker
Rose Young
Max Kalz
Ross Leary

Environmental Services

Henry Taylor
Maria Taylor
Kaye Henderson

Planned Activity Group

(Men's Shed)
Coordinator - Garry Smith

Planned Activity Group

(Adult Interest Group)
Coordinator - Sharon Kalz
Assistant - Jennet Young

General Practitioners

Dr Hulme Hay, MBBS,
ANZCOG, FRACGP
Dr Elizabeth Christie, MBBS,
BSc, MPM, CertFam Therapy
Dr Sybille Japhary, DRS, FFP,
ACUP

Dental Services

Dr Peter Favaloro, B.D.Sc
(Melb), L.D.S. (Vic)
Debbie Fall (Dental Assistant)
Dr Philip Ng
Jayde Joiner (Dental Assistant)
Syarna Baker (Dental Assistant)

Allied Health Professionals

(Physiotherapist)

Pat Helmore

(Podiatrist)

Stephen Learhinan

(Speech Pathologist)

Toni Seiler

Lucia Smith

Community Mental Health

Peter Mahoney, RN Psych
Steve Siers, RN Psych

Family & Child Health

Katy Radic
Helen McCarthy

Dietician

Amanda Banfield

Occupational Therapist

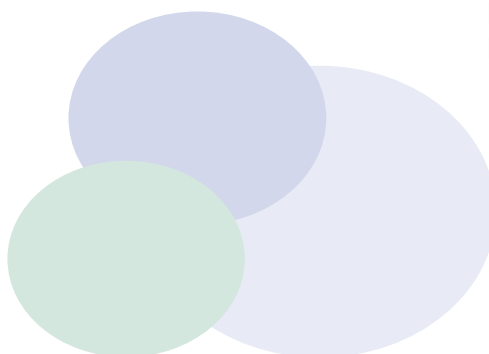
Lisa Manser
Sarah Pinkington

Massage Therapy

Colleen Reitschel
Christine Liedkte
Jennifer McShane

Diabetes Educator

Katy Radic



Our Services

Cann Valley Bush Nursing Centre is a Multi Purpose Centre that provides an array of services to meet your needs.

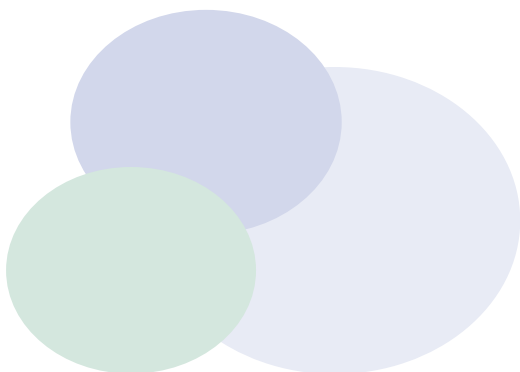
Acute

Clinical
Emergency
Medical
Palliative Care
Pathology



Home Based Services

Carer Support
Food Services - Delivered Meals
Home Nursing
Domestic Assistance
In-home Respite Care
Palliative Care
Personal Care
Post Acute Care
Property Maintenance
Volunteer Network
Equipment Hire

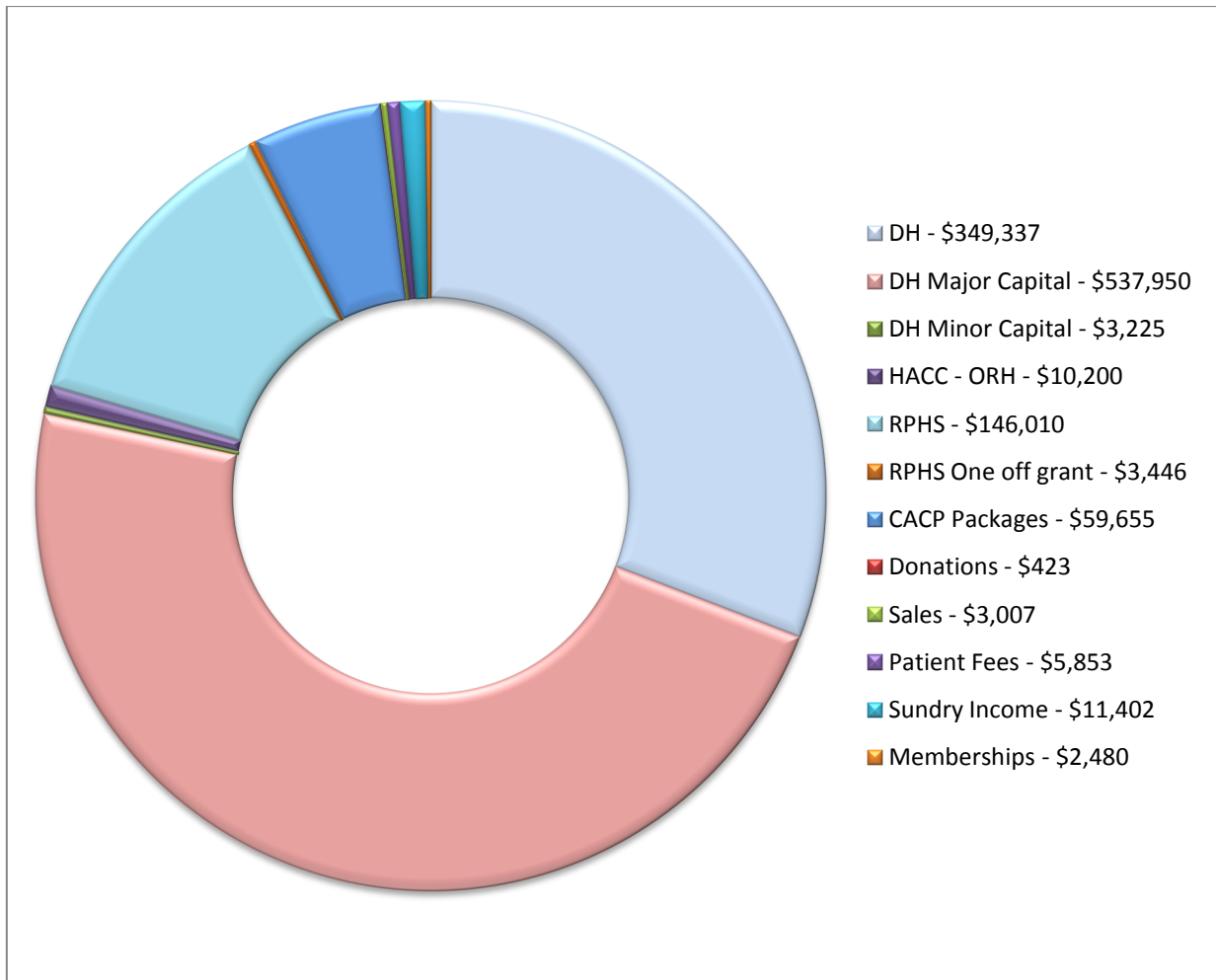


Primary Health Care

Assessments
Care Coordination
Planned Activity Group (Adult Interest Group)
Bus trips/Respite
Community Health Nursing
Counselling
Diabetes Management
Dietetics and Nutrition
Drug & Alcohol Support
Family & Child Health
General Practitioners
Health Promotion
Immunisation Clinics
Masseurs
Men's Health (including Men's Shed)
Mental Health
Occupational Therapy
Oral Health/Dental
Physiotherapy
Podiatry
Speech Pathology
Support and Activity Groups
Volunteer Driving
Women's Health Clinic

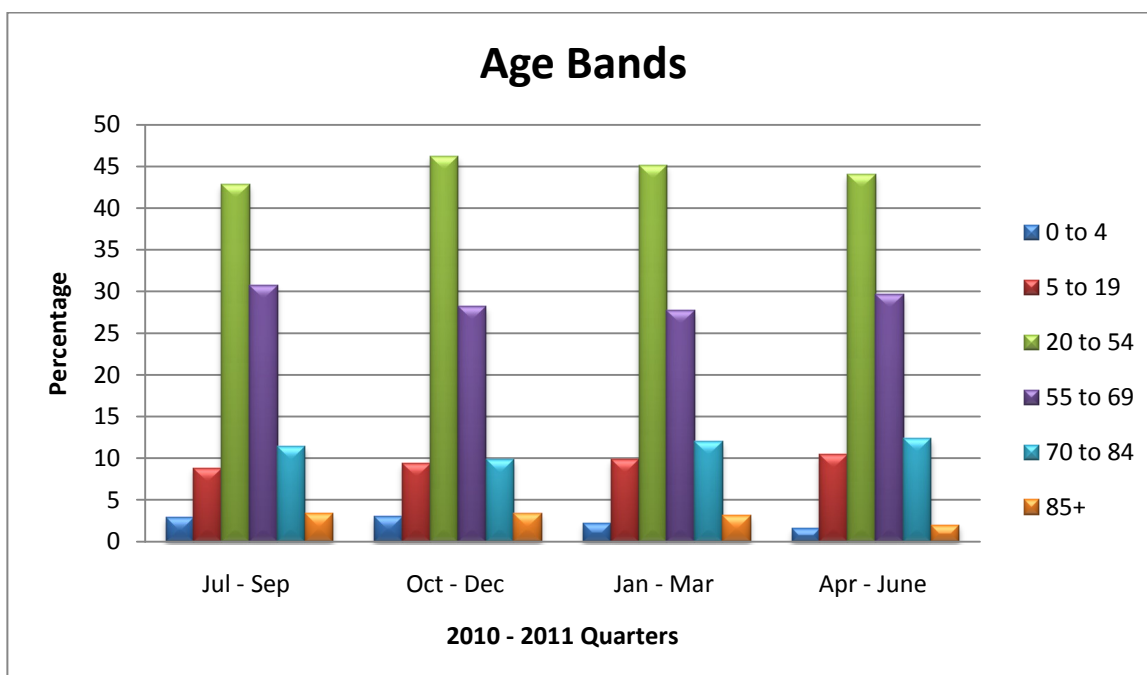


Report of Operations - Revenue by Source



Service Level & Activity

	2010/2011	2009/2010	2008/2009	2007/2008
Nursing at Centre contacts	7102	6917	6910	8054
Nursing out of hours contacts	399	505	457	455
Planned Activity Group contacts	185	298	313	227
Physiotherapy contacts	49	63	60	81
Speech Pathology contacts	13	44	43	33
Podiatry contacts	32	95	74	100
Home Based Services				
Domestic Assistance (occasions of service)	275	512	832	603
Delivered Meals	670	450	832	189
Property Maintenance (occasions of service)	214	298	291	254



How We Have Performed

Health Promotion

Health promotion and Early Detection work has included the following:

- Well-womens Clinic
- “Apply First Aid” courses x 2
- “Anaphylaxis/Epipen” (First Aid) course
- Men’s Health Promotion night with a roast dinner and speaker on Drug and Alcohol Management, a Primary Industries rep and Bunnings store rep with display.
- Australia Day Health checks in Cann River park
- Smiles 4 Miles
- Victorian Healthy Food Basket Survey
- Waiting room displays on various topics



CACPS & EACH Packages

The provision of 4 CACPS and 2 EACH packages have helped maintain some of the older members of our community in their own homes. Hardworking nurses, domestic assistance, property maintenance works and food services and volunteers work to maintain these clients in their home environment.



BOBs (Bloke’s Only Business)

The men’s group is well attended and operates twice a month. The enthusiasm is great amongst the men and with registered volunteers it is operating on a weekly basis. The men are producing some great items as pictured below.



How We Have Performed cont...

Remote Area Nurses (RANs)

Once again this year the nurses at the Victorian Bush Nursing Centres have maintained their accreditation with the annual Emergency Care Update Program conducted by Ambulance Victoria with protocols matching those of the ambulance service but including a greater range of emergency medications.



Dental Services

As well as the local community benefiting, people have been travelling an hour from locations in the east and west, such as Bemm River, Buldah, Mallacoota and Orbost, to access the private, public and student dental services.

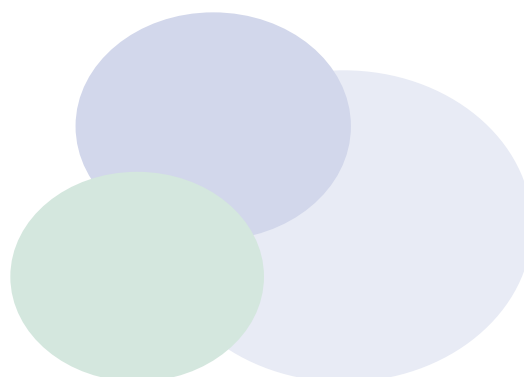
Volunteers

Sincere thanks to our volunteer drivers enabling community members to access appointments in various places. Trips have averaged around one per week as well as the monthly "Respite Bus" trips to Bairnsdale.



Training

- ◆ Remote Area Nurse Emergency Care Update Program
- ◆ Palliative Care
- ◆ Health Promotion (Wagner)
- ◆ Training in Certificate III in Home and Community Care
- ◆ Immunisation Update
- ◆ Dementia, Delirium & Depression
- ◆ ECG reading
- ◆ Diabetes Management
- ◆ Younger Onset Dementia
- ◆ Community Care Common Standards



How We Have Performed cont...

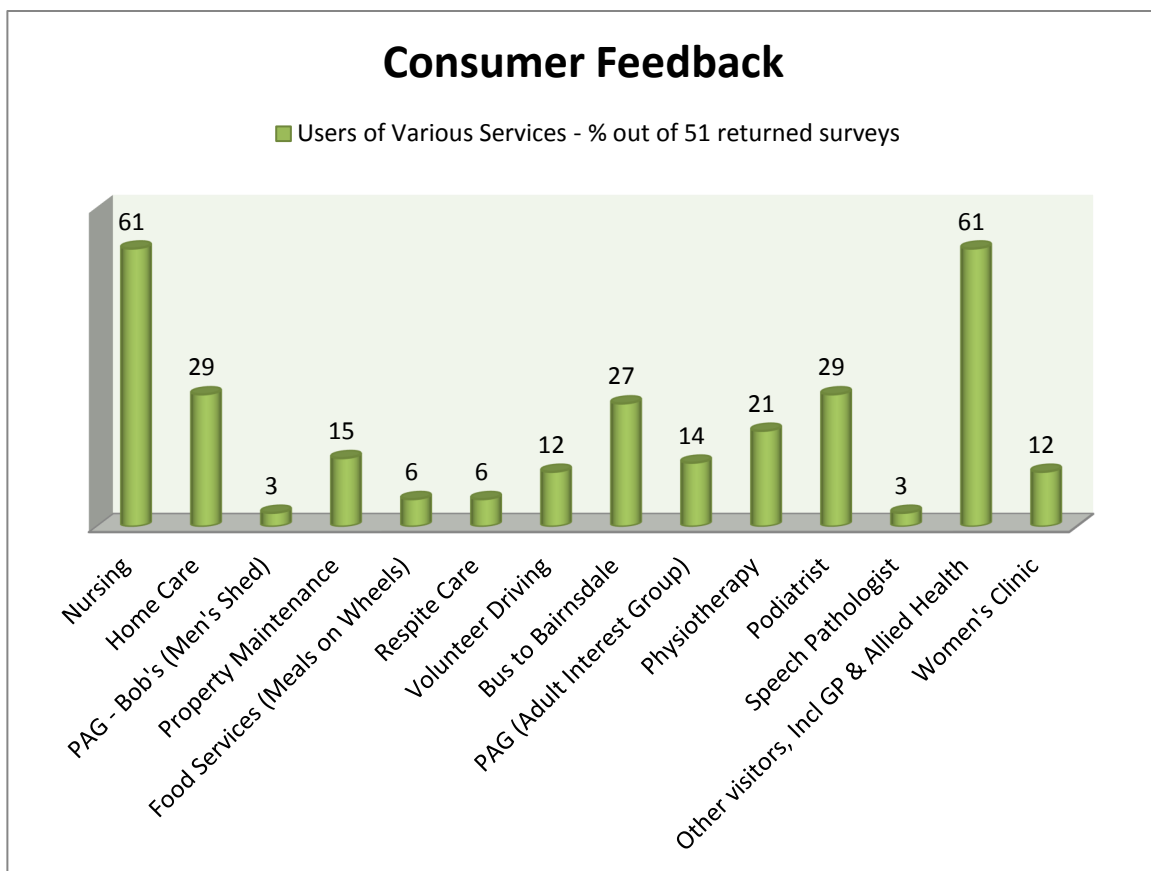
Consumer Feedback

A community survey was distributed to in June, 2011 with 28% of the community completing and returning surveys. This survey enabled us to obtain a good idea of the views of community members.

Specific grants from partnerships, state and commonwealth departments enable us to provide services such as home based services, volunteer driving, pathology specimen collection, immunisations, dental and other allied health services.

Below is one section of the survey highlighted. This is the results from the returned surveys.

Services of the Cann Valley Bush Nursing Centre you have used:



CANN VALLEY BUSH NURSING CENTRE INC.

STATEMENT BY MEMBERS OF THE COMMITTEE OF MANAGEMENT

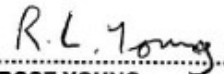
The Committee of Management has determined that the Association is not a reporting entity and that this special purpose financial report should be prepared in accordance with the accounting policies outlined in Note 1 to the financial statements.

In the opinion of the Committee of Management the financial report:

1. Presents a true and fair view of the financial position of Cann Valley Bush nursing Centre inc. as at 30 June 2011, its performance and cash flows for the year ended on that date.
2. At the date of this statement, there are reasonable grounds to believe that Cann Valley Bush Nursing Centre inc. will be able to pay its debts as and when they fall due.

This statement is made in accordance with a resolution of the Committee and is signed for and on behalf of the Committee of Management by:

President.....
JUDY MCKINNON

Treasurer.....
ROSE YOUNG

Dated this 14 day of September 2011

INDEPENDENT AUDITOR'S REPORT

To The Members of Cann Valley Bush Nursing Centre Inc.

We have audited the accompanying financial report, being a special purpose financial report, of Cann Valley Bush Nursing Centre Inc. which comprises the statement of financial position as at 30 June 2011, the statement of comprehensive income, and statement of cash flows for the year ended on that date, a summary of significant accounting policies and other explanatory notes and the statement by members of the committee.

www.whk.com.au

WHK Pty Ltd
ABN 64 006 466 351

Committee's Responsibility for the Financial Report

The committee of the association is responsible for the preparation and fair presentation of the financial report and have determined that the accounting policies described in Note 1 to the financial statements, which form part of the financial report, are consistent with the financial reporting requirements of the Associations Incorporation Act 1981 (Victoria) and are appropriate to meet the needs of the members. The committee's responsibilities also include establishing and maintaining internal control relevant to the preparation and fair presentation of the financial report that is free from material misstatement, whether due to fraud or error; selecting and applying appropriate accounting policies; and making accounting estimates that are reasonable in the circumstances.

Auditor's Responsibility

Our responsibility is to express an opinion on the financial report based on our audit. No opinion is expressed as to whether the accounting policies used, as described in Note 1, are appropriate to meet the needs of the members. We conducted our audit in accordance with Australian Auditing Standards. These Auditing Standards require that we comply with relevant ethical requirements relating to audit engagements and plan and perform the audit to obtain reasonable assurance whether the financial report is free of material misstatement.

An audit involves performing procedures to obtain audit evidence about the amounts and disclosures in the financial report. The procedures selected depend on the auditor's judgment, including the assessment of the risks of material misstatement of the financial report, whether due to fraud or error. In making those risk assessments, the auditor considers internal control relevant to the entity's preparation and fair presentation of the financial report in order to design audit procedures that are appropriate in the circumstances, but not for the purpose of expressing an opinion on the effectiveness of the entity's internal control. An audit also includes evaluating the appropriateness of accounting policies used and the reasonableness of accounting estimates made by the committee, as well as the overall presentation of the financial report.

The financial report has been prepared for distribution to members for the purpose of fulfilling the committee's financial reporting under the Associations Incorporation Act 1981 (Victoria). We disclaim any assumption of responsibility for any reliance on this report or on the financial report to which it relates to any person other than the members, or for any other purpose other than that for which it was prepared.

We believe that the audit evidence we have obtained is sufficient and appropriate to provide a basis for our audit opinion.

Independence

In conducting our audit, we have complied with the independence requirements of Australian professional ethical pronouncements.

Audit Opinion

In our opinion, the financial report of Cann Valley Bush Nursing Centre Inc. presents a true and fair view of the Association's financial position as at 30 June 2011 and of its performance and cash flows for the year ended on that date in accordance with the accounting policies described in Note 1 to the financial statements.

Basis of Accounting

Without modifying our opinion, we draw attention to Note 1 to the financial report, which describes the basis of accounting. The financial report has been prepared for the purpose of fulfilling the committees' financial reporting responsibilities under the Associations Incorporation Act 1981 (Victoria). As a result, the financial report may not be suitable for another purpose.

WHK Audit (Vic)

WHK Audit (Vic)



Rochelle Wrigglesworth

Partner

Date: 5 October 2011

CANN VALLEY BUSH NURSING CENTRE INC.

NOTES TO THE FINANCIAL REPORT FOR THE YEAR ENDED 30 JUNE 2011

Note 1: Statement of Accounting Policies

This financial report is a special purpose financial report prepared in order to satisfy the financial reporting requirements of the Associations Incorporation Act 1981 (Victoria). The Committee of Management has determined that the association is not a reporting entity.

The financial report has been prepared on an accruals basis and is based on historical costs and does not take into account changing money values, or except where stated, current valuations of non-current assets.

The following significant accounting policies, which are consistent with the previous year unless otherwise stated, have been adopted in the preparation of this financial report.

(a) Revenue

Income is recognised in accordance with AASB 118 Revenue, to the extent that it is earned.

Grants and contributions are recognised as income when the entity gains control on accordance with AASB 1004 Contributions.

(b) Property, Plant and Equipment

Each class of property, plant and equipment is carried as cost or fair value as indicated less, where applicable, any accumulated depreciation and impairment losses.

Land and buildings are recognised initially at cost and subsequently measured at fair value less accumulated depreciation. Fair value is based upon valuations issued by the East Gippsland Shire Council.

Increases in the carrying amount arising on revaluation of land and buildings are credited to a revaluation reserve in equity. Decreases that offset previous increases of the same asset are charged against asset revaluation reserves directly in equity; all other decreases are charged to the statement of comprehensive income.

Any accumulated depreciation at the date of revaluation is eliminated against the gross carrying amount of the asset and the net amount is restated to the revalued amounts of the asset.

Plant and Equipment

Plant and equipment are measured on the cost basis less depreciation and impairment losses. The carrying amount of plant and equipment is reviewed annually to ensure it is not in excess of the recoverable amount from these assets.

Depreciation

The depreciable amount of all fixed assets including buildings, but excluding freehold land, is depreciated on a straight-line basis over the asset's useful life to the association commencing from the time the asset is held ready for use.

CANN VALLEY BUSH NURSING CENTRE INC.

NOTES TO THE FINANCIAL REPORT FOR THE YEAR ENDED 30 JUNE 2011

Note 1: Statement of Accounting Policies (cont'd)

(b) Property, Plant and Equipment (cont'd)

The depreciation rates used for each class of depreciable assets are:

Class of Fixed Asset	Depreciation Rates	
	2011	2010
Buildings	2.5% Prime Cost	2.5% Prime Cost
Furniture and Fittings	10% Prime Cost	10% Prime Cost
Motor Vehicles	22.5% Diminishing Value	22.5% Diminishing Value
Plant & Equipment	10%-33.33% Prime Cost	10%-33.33% Prime Cost

(c) Employee Benefits

Provision is made for the association's liability for employee benefits arising from services rendered by employees to balance date. Employee benefits that are expected to be settled within one year have been measured at the amounts expected to be paid when the liability is settled. Employee benefits payable later than one year have been measured at their nominal value.

(d) Leases

Leases of fixed assets where substantially all the risk and benefits incidental to the ownership of the asset, but not the legal ownership are transferred to the association are classified as finance leases.

Finance leases are capitalised by recording an asset and a liability at the lower of the amounts equal to the fair value of the leased property or the present value of the minimum lease payments.

Including any guaranteed residual values. Lease payments are allocated between the reduction of the lease liability and the lease interest expense for that period.

Leased assets are depreciated on a straight-line basis over the shorter of their estimated useful lives or the lease term.

Lease payments for operating leases, where substantially all the risks and benefits remain with the lessor, are charged as expenses in the periods in which they are incurred.

Lease incentives under operating leases are recognised as a liability and amortised on a straight-line basis over the life of the lease term.

Critical Accounting Estimates and Judgments

In the application of Australian Accounting Standards, management is required to make judgments, estimates and assumptions about the carrying value of assets and liabilities that are not readily apparent from other sources.

The committee members evaluate estimates and judgments incorporated into the financial report based on historical knowledge and best available current information. Estimate assume a reasonable expectation of future events and are based on current trends and economic data obtained both externally and within the association.

CANN VALLEY BUSH NURSING CENTRE INC.

ABN: 69 461 662 367

**STATEMENT OF COMPREHENSIVE INCOME
FOR THE YEAR ENDED 30 JUNE 2011**

	Note	2011 \$	2010 \$
Revenue from Operating Activities	2	621,824	605,236
Revenue from Non-Operating Activities	2	22,649	12,393
Employee Benefits	3	(447,122)	(443,654)
Non-Salary Labour Costs	3	(11,182)	(9,285)
Supplies & Consumables	3	(24,690)	(25,490)
Other Expenses	3	<u>(136,974)</u>	<u>(124,870)</u>
Net Result before Capital & Specific Items		<u>24,506</u>	<u>14,331</u>
Capital Purpose Income	2	541,175	-
Net Gain from Sale of Non-Current Assets	2, 6	5,521	-
Depreciation	3, 6	<u>(51,373)</u>	<u>(47,282)</u>
NET RESULT FOR THE YEAR		<u>519,829</u>	<u>(32,951)</u>
Other Comprehensive Income		-	-
Revaluation of non-financial assets	7	<u>-</u>	<u>276,150</u>
TOTAL COMPREHENSIVE INCOME FOR THE YEAR		<u><u>519,829</u></u>	<u><u>243,199</u></u>

The accompanying notes form part of the financial report

CANN VALLEY BUSH NURSING CENTRE INC.

**STATEMENT OF FINANCIAL POSITION
AS AT 30 JUNE 2011**

	Note	2011 \$	2010 \$
CURRENT ASSETS			
Cash Assets	4(b)	152,197	193,830
Accrued Interest		6,696	-
Investments		517,950	-
Prepayments		-	1,941
Receivables		40,755	-
Stock on Hand - at Cost		5,051	4,749
Total Current Assets		<u>722,649</u>	<u>200,521</u>
NON-CURRENT ASSETS			
Property, Plant & Equipment	6	<u>900,451</u>	<u>895,606</u>
Total Non-Current Assets		<u>900,451</u>	<u>895,606</u>
TOTAL ASSETS		<u>1,623,100</u>	<u>1,096,126</u>
CURRENT LIABILITIES			
Provision for Annual leave		24,402	20,461
Provision for Long Service Leave		61,399	55,374
GST Payable		5,791	9,139
Monies Held in Trust - "Good Old Days Project"		2,630	2,630
Total Current Liabilities		<u>94,222</u>	<u>87,604</u>
NON-CURRENT LIABILITIES			
Provision for Long Service Leave		<u>1,678</u>	<u>1,152</u>
Total Non-Current Liabilities		<u>1,678</u>	<u>1,152</u>
TOTAL LIABILITIES		<u>95,900</u>	<u>88,756</u>
NET ASSETS		<u>1,527,199</u>	<u>1,007,370</u>
EQUITY			
Accumulated Surplus		1,251,049	731,220
Property Revaluation Surplus	7	<u>276,150</u>	<u>276,150</u>
TOTAL EQUITY		<u>1,527,199</u>	<u>1,007,370</u>

The accompanying notes form part of this financial report

CANN VALLEY BUSH NURSING CENTRE INC.

**STATEMENT OF CASH FLOWS
FOR THE YEAR ENDED 30 JUNE 2011**

	Note	2011 \$	2010 \$
CASH FLOWS FROM OPERATING ACTIVITIES			
Government Grants - Operating		567,724	577,323
Interest		23	514
Other Receipts		29,275	41,662
Suppliers and Employees		<u>(611,184)</u>	<u>(598,774)</u>
Cash (Used In)/Generated from Operations		<u>(14,162)</u>	<u>20,725</u>
Capital Grants		<u>541,175</u>	<u>-</u>
Net Cash Inflow from Operating Activities	4(a)	<u>527,013</u>	<u>20,725</u>
CASH FLOWS FROM INVESTING ACTIVITIES			
Proceeds from Sale of Non-Current Assets		28,250	-
Payments for Buildings, Plant & Equipment		<u>(78,947)</u>	<u>(38,195)</u>
Investment of Funds		<u>(517,950)</u>	<u>-</u>
Net Cash Outflow from Investing Activities		<u>(568,647)</u>	<u>(38,195)</u>
Net Decrease in Cash Held		<u>(41,634)</u>	<u>(17,470)</u>
Cash at the beginning of the year	4(b)	<u>193,830</u>	<u>211,300</u>
CASH AT THE END OF THE YEAR	4(b)	<u>152,197</u>	<u>193,830</u>

The accompanying notes form part of this financial report

CANN VALLEY BUSH NURSING CENTRE INC.

**STATEMENT OF CHANGES IN EQUITY
FOR THE YEAR ENDED 30 JUNE 2011**

	Note	Accum. Surplus \$	Asset Reval'n Reserve \$	TOTAL \$
Balance 1 July 2009		764,171	-	764,171
Net result for the year		(32,951)	-	(32,951)
Other comprehensive income	7	-	276,150	276,150
Balance 30 June 2010		731,220	276,150	1,007,370
Total comprehensive income for the year		519,829	-	519,829
Balance 30 June 2011		1,251,049	276,150	1,527,199

The accompanying notes form part of this financial report

CANN VALLEY BUSH NURSING CENTRE INC.

NOTES TO THE FINANCIAL REPORT FOR THE YEAR ENDED 30 JUNE 2011

NOTE 2: REVENUE

Revenue from Operating Activities	Note	OPERATING		CACPS		RPHS		MPC		DRUMMER		EACH		TOTAL		
		2011	2010	2011	2010	2011	2010	2011	2010	2011	2010	2011	2010	2011	2010	
		\$	\$	\$	\$	\$	\$	\$	\$	\$	\$	\$	\$	\$	\$	
<i>Government Grants</i>		359,537	357,705	-	-	-	-	-	-	-	-	-	-	-	359,537	357,705
- Dept Human Services		-	-	59,656	57,461	186,507	-	-	58,795	-	85,058	-	16,187	-	246,162	217,501
- Dept Health & Ageing		359,537	357,705	59,656	57,461	186,507	-	-	58,795	-	85,058	-	16,187	-	605,699	575,206
Indirect Contributions by DHS - Insurance Fees		2,780	2,117	-	-	-	-	-	-	-	-	-	-	-	2,780	2,117
Patient Fees		6,854	7,415	-	570	565	-	-	140	-	305	-	120	-	7,419	8,550
Sales		3,007	3,565	-	-	-	-	-	-	-	-	-	-	-	3,007	3,565
		9,861	10,980	-	570	565	-	-	140	-	305	-	120	-	10,426	12,115
<i>Specific Purpose</i>		2,480	4,430	-	-	-	-	-	-	-	-	-	-	-	2,480	4,430
Subscriptions		438	11,368	-	-	-	-	-	-	-	-	-	-	-	438	11,368
Donations		2,919	15,798	-	-	-	-	-	-	-	-	-	-	-	2,919	15,798
		375,096	386,600	59,656	58,031	187,072	-	-	58,935	-	85,363	-	16,307	-	621,824	605,236
Revenue from Non-Operating Activities																
Interest		6,710	26	9	14	-	-	-	11	-	-	-	1	-	6,719	52
Sundry Income		11,402	11,822	918	-	3,610	-	-	520	-	-	-	-	-	15,930	12,342
		18,112	11,848	927	14	3,610	-	-	531	-	-	-	1	-	22,649	12,393
Revenue from Capital Purpose Income																
DHS - Capital Grant: Shed, Mower, Trailer & Infrastructure		541,175	-	-	-	-	-	-	-	-	-	-	-	-	541,175	-
Net Gain on Sale of Non-Current Assets		5,521	-	-	-	-	-	-	-	-	-	-	-	-	5,521	-
		546,696	-	-	-	-	-	-	-	-	-	-	-	-	546,696	-
Total Revenue		939,905	398,448	60,582	58,045	190,682	-	-	59,465	-	85,363	-	16,309	-	1,191,168	617,630

CANN VALLEY BUSH NURSING CENTRE INC.

NOTES TO THE FINANCIAL REPORT FOR THE YEAR ENDED 30 JUNE 2011

NOTE 3: EXPENSES

	OPERATING		CACPS		RPHS		MPC		DRUMMER		EACH		TOTAL	
	2011	2010	2011	2010	2011	2010	2011	2010	2011	2010	2011	2010	2011	2010
	\$	\$	\$	\$	\$	\$	\$	\$	\$	\$	\$	\$	\$	\$
<i>Employee Benefits</i>														
Salaries & Wages	283,575	265,819	34,831	36,976	88,066	-	-	39,172	-	49,980	-	10,545	406,471	402,493
Superannuation	19,638	28,607	4,737	2,206	9,989	-	-	-	-	2,926	-	-	34,365	33,739
WorkCover	2,514	1,484	1,257	1,484	2,514	-	-	1,484	-	1,484	-	1,484	6,285	7,422
	305,727	295,911	40,826	40,667	100,569	-	-	40,657	-	54,391	-	12,030	447,122	443,654
<i>Non-Salary Labour Costs</i>														
	-	-	54	179	11,128	-	-	3,948	-	5,158	-	-	11,182	9,285
<i>Supplies & Consumables</i>														
Medical Supplies	24,262	23,340	9	72	419	-	-	655	-	999	-	425	24,690	25,490
<i>Other Expenses</i>														
Accounting & Audit Fee	6,120	5,902	280	-	280	-	-	-	-	-	-	-	6,680	6,222
Advertising	2,868	-	-	-	-	-	-	84	-	168	-	-	2,868	252
Bank Charges	36	30	-	-	-	-	-	-	-	-	-	-	36	30
Cleaning	279	275	-	-	-	-	-	-	-	-	-	-	279	275
Client Repairs & Maintenance	1,154	-	9,601	-	-	-	-	-	-	-	-	-	10,754	-
Computer Expenses	963	7,736	-	-	186	-	-	-	-	204	-	-	1,149	7,940
Electricity & Gas	1,294	-	1,480	-	1,965	-	-	-	-	-	-	-	4,740	-
Freight & Cartage	1,785	948	100	-	-	-	-	76	-	6	-	-	1,885	1,029
Insurance Costs funded by DHS	2,780	2,117	-	-	-	-	-	-	-	-	-	-	2,780	2,117
Lease Payments - Bus	-	-	-	-	11,648	-	-	-	-	11,648	-	-	11,648	11,648
Licences, Registrations and Permits	10,266	5,800	-	58	-	-	-	-	-	-	-	-	10,266	5,858
Meals on Wheels	12,801	8,357	2,646	2,908	-	-	-	-	-	-	-	1,600	15,447	12,864
Motor Vehicle Expenses	2,983	2,722	2,589	2,713	6,874	-	-	733	-	6,396	-	-	12,446	12,564

CANN VALLEY BUSH NURSING CENTRE INC.

NOTES TO THE FINANCIAL REPORT FOR THE YEAR ENDED 30 JUNE 2011

NOTE 3: EXPENSES (CONTD)

	Note	OPERATING		CACPS		RPHS		MPC		DRUMMER		EACH		TOTAL	
		2011	2010	2011	2010	2011	2010	2011	2010	2011	2010	2011	2010	2011	2010
		\$	\$	\$	\$	\$	\$	\$	\$	\$	\$	\$	\$	\$	\$
Payroll Levy		2,947	2,525	426	-	108	-	402	-	-	-	-	-	2,881	2,927
Planned Activities		3,089	3,168	-	-	416	-	-	-	-	-	-	-	3,505	3,168
Police Checks		66	-	146	-	33	-	-	-	-	-	-	-	244	-
Postage & Stationery		933	1,901	1,742	465	3,832	-	1,288	-	2,293	-	-	-	6,507	5,947
Rates		1,152	2,237	-	-	-	-	-	-	-	-	-	-	1,152	2,237
Repairs & Replacements		6,414	10,935	1,014	2,364	44	-	980	-	-	-	-	-	7,472	14,278
Staff Amenities		2,434	2,990	-	-	-	-	-	-	-	-	-	-	2,434	2,990
Staff Training		696	1,140	129	200	3,595	-	1,565	-	377	-	-	-	4,420	3,283
Subscriptions & Memberships		10,508	10,774	-	-	-	-	-	-	-	-	-	-	10,508	10,774
Sundry Expenses		1,463	795	744	403	-	-	-	-	-	-	-	-	2,207	1,198
Telephone		2,245	3,576	2,543	1,285	3,290	-	1,928	-	1,131	-	-	-	8,078	7,920
Travelling Expenses		529	2,878	-	-	6,060	-	6,471	-	-	-	-	-	6,588	9,349
		75,203	76,803	23,440	10,397	38,330	-	13,527	-	22,543	-	1,600	-	136,974	124,870
Depreciation	6(c)	45,251	43,502	5,900	3,780	222	-	-	-	-	-	-	-	51,373	47,282
		45,251	43,502	5,900	3,780	222	-	-	-	-	-	-	-	51,373	47,282
Total Expenses		450,443	439,556	70,229	55,094	150,668	-	58,786	-	83,091	-	14,055	-	671,340	650,582
Net Result for the Year		489,462	(41,108)	(9,647)	2,951	40,014	-	679	-	2,272	-	2,254	-	519,829	(32,951)

CANN VALLEY BUSH NURSING CENTRE INC.

NOTES TO THE FINANCIAL REPORT FOR THE YEAR ENDED 30 JUNE 2011

	2011	2010
	\$	\$
NOTE 4: CASH FLOW INFORMATION		
(a) Reconciliation of Net Cash Provided by Operating Activities to Net Result for the Year		
Net Result for the year	519,829	(32,951)
<i>Non-cash items:</i>		
Depreciation	51,373	47,282
Net Gain on Sale of Non-Current Assets	(5,521)	
<i>Changes in assets and liabilities:</i>		
Decrease/(Increase) in Stock on Hand	(302)	(749)
(Increase)/Decrease in Prepayments	1,941	(1,941)
(Increase)/Decrease in Receivables	(47,451)	1,870
Increase/(Decrease) in Employee Entitlements	10,492	7,673
increase/(Decrease) in Payables	-	(2,147)
Increase/(Decrease) in GST Payable	(3,348)	1,688
Net cash from Operating Activities	<u>527,013</u>	<u>20,725</u>

(b) Cash at the end of the year is made up as follows:

CACPS Account	11,732	32,590
Drummer Account	5,519	(596)
EACH Account	4,023	5,713
Investment Account	62,408	42,974
Multi Purpose Centre Account	-	18,531
Operating Bank Account	(11,103)	22,139
Provisions Account	<u>79,617</u>	<u>72,479</u>
TOTAL	<u>152,197</u>	<u>193,830</u>

NOTE 5: COMMITMENTS

Operating Lease Commitments - Bus

Payable - minimum lease payments:		
- not later than 1 year	27,912	9,707
- later than 1 but not later than 5 years	-	27,912
	<u>27,912</u>	<u>37,619</u>

Capital Commitments

The Centre received an Infrastructure Upgrade capital grant of \$537,950. To date no tenders have been sought.

CANN VALLEY BUSH NURSING CENTRE INC.

NOTES TO THE FINANCIAL REPORT FOR THE YEAR ENDED 30 JUNE 2011

	2011	2010
	\$	\$
NOTE 6: PROPERTY, PLANT & EQUIPMENT		
(a)		
Land at Valuation	<u>35,000</u>	<u>35,000</u>
Buildings at Valuation	684,000	684,000
Less Accumulated Depreciation	<u>(34,200)</u>	<u>(17,100)</u>
	<u>649,800</u>	<u>666,900</u>
Buildings at Cost	25,387	15,912
Less Accumulated Depreciation	<u>(668)</u>	<u>(38)</u>
	<u>24,719</u>	<u>15,874</u>
Total Buildings	<u>674,519</u>	<u>682,774</u>
Plant & Equipment - at Cost	202,456	193,240
less Accumulated Depreciation	<u>(90,687)</u>	<u>(69,949)</u>
	<u>111,769</u>	<u>123,291</u>
Motor Vehicles - at Cost	60,255	56,230
less Accumulated Depreciation	<u>(5,981)</u>	<u>(30,057)</u>
	<u>54,274</u>	<u>26,173</u>
Furniture & Fittings - at Cost	46,053	46,053
less Accumulated Depreciation	<u>(21,164)</u>	<u>(17,685)</u>
	<u>24,889</u>	<u>28,368</u>
Total Non-Current Assets	<u><u>900,451</u></u>	<u><u>895,606</u></u>

CANN VALLEY BUSH NURSING CENTRE INC.

NOTES TO THE FINANCIAL REPORT FOR THE YEAR ENDED 30 JUNE 2011

	2011	2010
	\$	\$
NOTE 7 - PROPERTY REVALUATION SURPLUS		
Balance 1 July	276,150	-
<i>Revaluation Increment:</i>		
- Land	-	13,442
- Building	-	262,708
Balance 30 June	<u>276,150</u>	<u>276,150</u>
 Represented by:		
- Land	13,442	13,442
- Buildings	<u>262,708</u>	<u>262,708</u>
	<u>276,150</u>	<u>276,150</u>

NOTE 8: EVENTS OCCURRING AFTER REPORTING PERIOD

The Committee of Management is unaware of any subsequent events requiring disclosure. (2010: Nil)

NOTE 9: CONTINGENT ASSETS AND CONTINGENT LIABILITIES

Contingent Assets	<u>-</u>	<u>-</u>
Contingent Liabilities	<u>-</u>	<u>-</u>

NOTE 10: RELATED PARTY DISCLOSURES

Committee members Judy Howell and Judy McKinnon have provided services to the Centre on normal terms and conditions.

CANN VALLEY BUSH NURSING CENTRE INC.

NOTES TO THE FINANCIAL REPORT FOR THE YEAR ENDED 30 JUNE 2011

NOTE 6: PROPERTY, PLANT & EQUIPMENT (CONTD)

(b) Reconciliation of carrying amount for the current and previous year.

2011	Land & Buildings Valuation \$	Land at Val'n \$	Bldgs at Cost	Plant & Equip \$	Furniture & Equip \$	Motor Vehicles \$	TOTAL \$
Balance 1 July 2010	-	35,000	666,900	15,874	123,291	28,368	895,606
Additions	-	-	-	9,475	9,217	-	18,692
Transfers	-	-	-	-	-	60,255	60,255
Disposals	-	-	-	-	-	(22,729)	(22,729)
Depreciation & Amortisation	-	-	(17,100)	(630)	(20,739)	(3,479)	(51,373)
Balance 30 June 2011	-	35,000	649,800	24,719	111,769	24,889	900,451

2010	Land & Buildings \$	Land \$	Bldgs at Val'n \$	Bldgs at Cost	Plant & Equip \$	Furniture & Equip \$	Motor Vehicles \$	TOTAL \$
Balance 1 July 2009	442,849	-	-	-	130,162	21,759	33,773	628,543
Additions	-	-	-	15,912	12,733	9,550	-	38,195
Transfers	(442,849)	21,558	421,291	-	-	-	-	-
Revaluation Increment	-	13,442	262,708	-	-	-	-	276,150
Disposals	-	-	-	-	-	-	-	-
Depreciation & Amortisation	-	-	(17,100)	(38)	(19,604)	(2,941)	(7,599)	(47,282)
Balance 30 June 2010	-	35,000	666,900	15,874	123,291	28,368	26,173	895,606

Land and Buildings carried at Valuation

Land and buildings were revalued at 1 July 2009 based upon East Gippsland Shire Council's latest valuation.

	2011 \$	2010 \$
(c) Net Gain on Disposal of Non-Current Assets		
Proceeds from Disposal of Motor Vehicles	28,250	-
Less Written Down Value of Motor Vehicles Sold	(22,729)	-
Net Gain/(Loss) on Disposal of Motor Vehicles	<u>5,521</u>	<u>-</u>